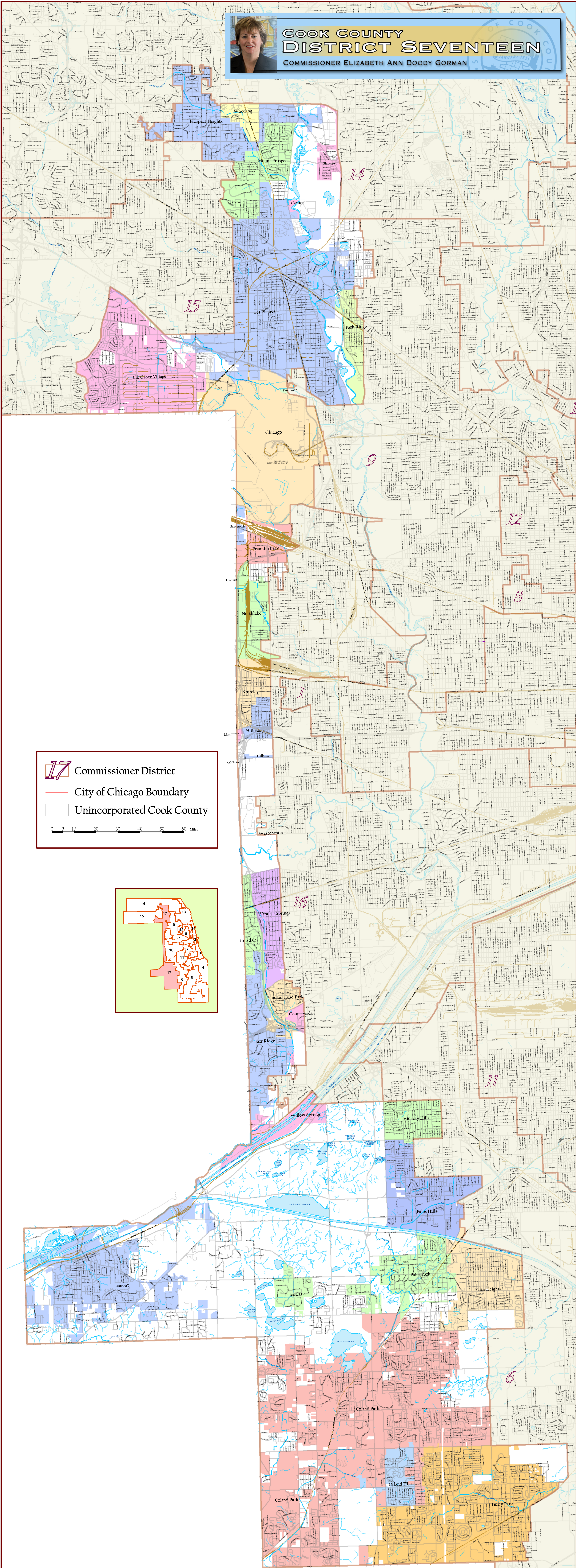
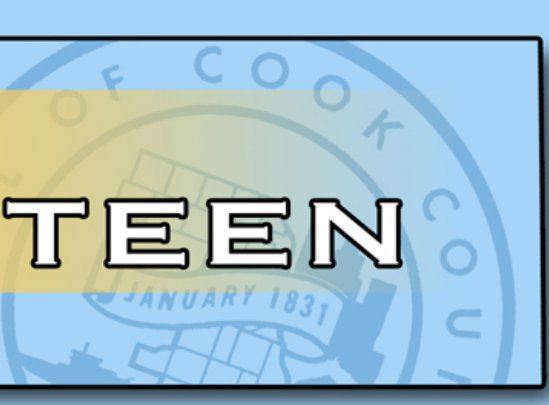




# COOK COUNTY DISTRICT SEVENTEEN

COMMISSIONER ELIZABETH ANN DOODY GORMAN

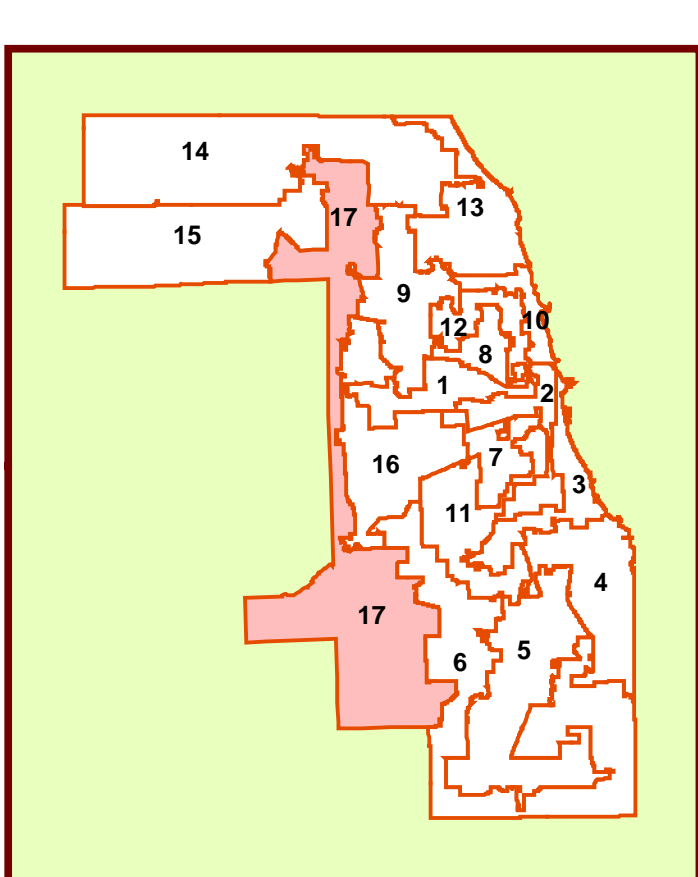


**17** Commissioner District

— City of Chicago Boundary

□ Unincorporated Cook County

0 5 10 20 30 40 50 60 Miles







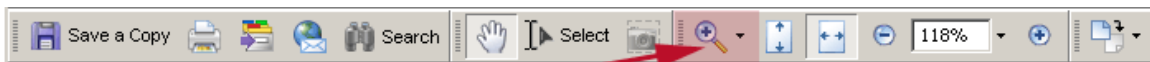
## Cook County District Maps Acrobat PDF File Tips (October 2007)

These Adobe Acrobat PDF format maps of Cook County Commissioner Districts are provided to give the public a detailed view of district boundaries and surrounding district areas.

These are large-format maps, meaning that at full-size, they will print out to 27" wide images. This allows you very detailed map images.

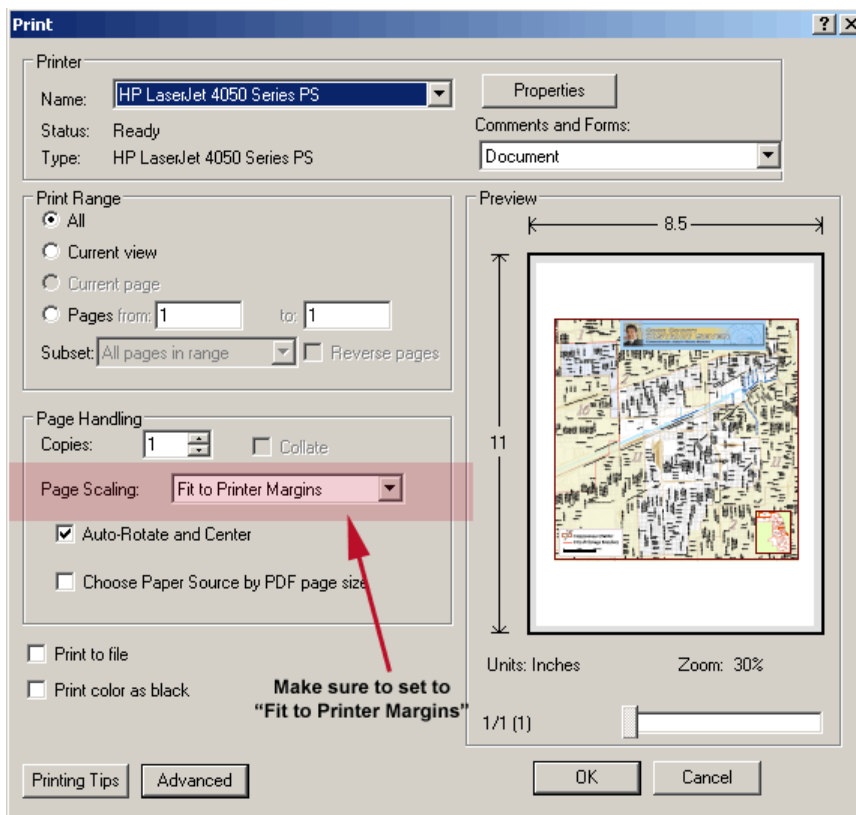
The following are some tips for getting the most out of using these map files:

- **Zoom In** - Use the Adobe Acrobat "zoom in" feature on the Acrobat toolbar to magnify the image and view map details.



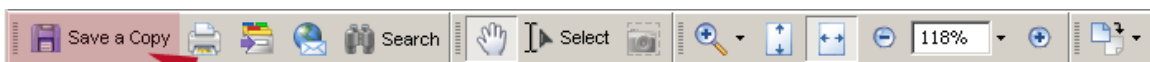
Zoom In tool

- **Printing** – Be sure when printing these maps on standard letter-sized paper (8.5" x 11") to change your Print settings to "Fit to Printer Margins" and only Page 1 of 1, so that these instructions do not print as well:



Make sure to set to  
"Fit to Printer Margins"

- **Saving the files** - you can save these files locally to your computer if you wish to view or use them off-line.



Save File Locally